



UTSouthwestern
Medical Center™

pediatric gastroenterology

FELLOWSHIP PROGRAM





table of contents

| | |
|------------------------------------|----|
| From the Fellowship Directors | 5 |
| Fellowship Leaders | 6 |
| Teaching Institutions | 7 |
| Curriculum | 8 |
| Fellowship: First Year | |
| Fellowship: Second and Third Years | |
| Specialty Electives | |
| Continuity Clinics | |
| Procedures | |
| Training Tracts | 10 |
| Teaching and Didactic Activities | 11 |
| Sample Weekly Conference Schedule | 13 |
| Developing Teaching Skills | 13 |
| Alumni's Perspectives | 14 |
| Fellows' Perspectives | 16 |
| Living in Dallas | 17 |
| From the Division Chief | 18 |
| Applying to Our Program | 19 |



Southwestern
Pediatric Group

SOUTHWESTERN
LOCAL CENTER

Arina M. Ramirez, MD
Pediatric
Gastroenterology

from the fellowship directors

Welcome to the Pediatric Gastroenterology, Hepatology and Nutrition Fellowship Program at UT Southwestern Medical Center (UTSW). Our mission is to provide an environment that encourages the development of the cognitive, clinical, procedural and critical research skills that are essential in cultivating a successful and productive career as an academic pediatric gastroenterologist. Our training program is fully accredited by the Residency Review Committee of American College of Graduate Medical Education (ACGME).

Ranked 15th in the nation by *U.S. News & World Report* 2023-24, the UT Southwestern Division of Pediatric Gastroenterology at Children's HealthSM in Dallas provides integrated and comprehensive care to children with a range of gastrointestinal illnesses, from the common to the complex.

The clinical services provided by the Division are not dependent upon fellows. The fellowship program is structured primarily as a learning experience. It consists of three years of training: the first year focuses mainly on developing and mastering clinical skills, and the second and third years concentrate on the development of analytical research skills that will guide each fellow in the successful completion of a scholarly project.

Thank you for your interest in our fellowship program. This brochure is intended to provide an overview of our program and help you with the application process. Please feel free to contact us directly with any questions you may have. We hope you agree that we provide one of the most comprehensive and competitive training programs anywhere, and we hope you choose UTSW and Children's Medical Center for the next phase of your career.

Sincerely,

MEGHANA SATHE, M.D.

Fellowship Director

meghana.sathe@utsouthwestern.edu

CHARINA M. RAMIREZ, M.D.

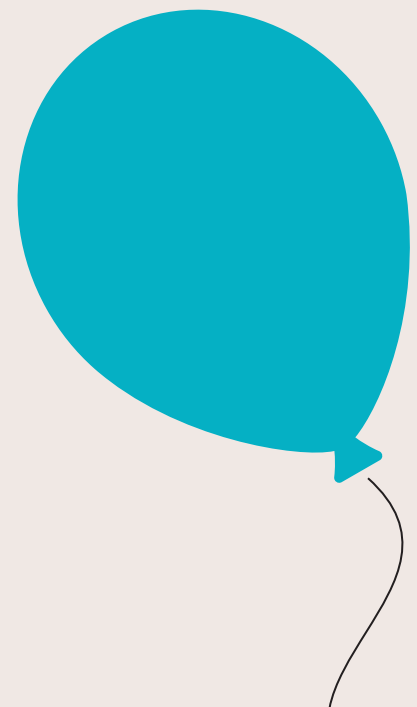
Associate Fellowship Director

charina.ramirez@utsouthwestern.edu

ALLISON MILES

Program Coordinator

allison.miles@utsouthwestern.edu



fellowship leadership

An Educational Committee consisting of faculty members and fellows provides guidance and oversight to our fellowship program. The committee is responsible for overseeing the academic aspects of the program, including the structure of rotations, electives, didactic activities and recruitment.

Our program also has a Clinical Competence Committee in charge of reviewing evaluations and the progress of all our fellows. The committee is also responsible for preparing the semiannual milestone evaluations of each fellow for the ACGME and providing advice to the training directors regarding a fellow's progress, including recommendations for promotion.

In addition, each fellow has a Scholarship Oversight Committee that provides support and guidance in the development of their individual scholarly activity. This committee consists of three or more UTSW faculty members, including the fellow's primary research mentor, allowing for a broader perspective for overall career guidance.

faculty

Our program consists of 32 faculty members offering expertise in general gastroenterology as well as all subspecialty areas. Our faculty members are nationally recognized experts and actively pursue research in many important areas of gastrointestinal, nutritional and hepatic diseases. Ongoing research activities are supported through collaborations with industry sponsors and research foundations, including the National Institutes of Health, the Cystic Fibrosis Foundation, and the Crohn's and Colitis Foundation of America.



teaching institutions

UT Southwestern Medical Center

UT Southwestern Medical Center is the most prominent medical education and biomedical research institution in Texas. It is the largest medical school in the University of Texas System. Seven UT Southwestern alumni and/or faculty members have been awarded Nobel Prizes. In addition, the faculty currently includes 25 members of the National Academy of Sciences, 17 members of the National Academy of Medicine, 15 Howard Hughes Medical Institute Investigators and 15 members of the American Academy of Arts and Science.



2,000 clinical residents and fellows annually



5,700 active research projects



Nearly \$425 million in annual research funding

Children's HealthSM and Children's Medical Center Dallas

The core of our training is performed at Children's Medical Center Dallas, the flagship hospital of Children's Health. Recognized as one of the top pediatric hospitals in the nation by *U.S. News & World Report*, this health care center has 490 licensed beds, including 77 Level I PICU and CVICU beds, more than 25 subspecialties, and a Level I trauma center. It has a 24-bed inpatient Gastroenterology unit, an endoscopy suite, an outpatient surgical center, a solid organ transplant clinic, and a dedicated Gastroenterology outpatient clinic. The clinical activity of our division is centered on providing high-quality care to our large-volume service:



20,000 outpatient visits annually



2,000 inpatient admissions annually



More than 3,000 procedures per year

Other Training Sites

In addition, we provide consultation in the NICU and Newborn Nursery at Parkland Memorial Hospital, UT Southwestern's William P. Clements Jr. University Hospital and Texas Health Resources Presbyterian Hospital. Additional elective rotations and research opportunities are available at Children's Medical Center Plano, Baylor University Medical Center and the Veteran Administration North Texas Health Care System located in downtown Dallas.

curriculum

Fellowship: First Year

The emphasis of the first year is acquiring knowledge and clinical skills in gastroenterology, hepatology and nutrition. Fellows participate in rotations on the Gastroenterology Inpatient Unit, the Hepatology Inpatient Unit, and the Consult Service. Fellows have four weeks of total elective time during their first year. During two of these weeks, fellows can select from a host of specialty elective programs, including Liver Transplant, Hepatology, Intestinal Rehabilitation, Inflammatory Bowel Disease, Cystic Fibrosis, Eosinophilic Esophagitis, and Aerodigestive and Motility. Additionally, interested fellows can gain exposure to specialized procedures in endoscopic retrograde cholangiopancreatography (ERCP), endoscopic ultrasound and motility studies. Fellows also have two research elective weeks during the first year to explore potential research options and mentors for their focused academic endeavor.

Fellowship: Second and Third Years

Fellows will focus on a basic science project or clinical project during the subsequent two years of fellowship to meet the ACGME requirements for scholarly activity. For basic science projects, emphasis is given to experimental design, acquiring laboratory skills and understanding the pathway for success as a physician-scientist. For clinical investigation, emphasis is focused on the development of skills for a successful career in patient-oriented research. Both areas emphasize acquiring skills in scientific presentation, writing abstracts and manuscripts, and grant development. Research mentorship is not confined to the Pediatric Gastroenterology Division but may come from other areas at UTSW and our affiliate centers to suit the interests of the fellows. Fellows also participate in a Quality Improvement Project that is guided through a standardized curriculum. This allows the fellows to gain an in-depth understanding of how to conduct robust quality improvement.

Specialty Electives

Many opportunities exist to participate in electives during fellowship training. Electives at other academic institutions are also available but require the additional approval of the Division Director and the Chairman of the Department of Pediatrics.

Continuity Clinics

The outpatient clinics provide the pediatric gastroenterology fellow with the unique opportunity to follow a cohort of patients longitudinally. The clinics make special efforts to provide a variety of patients with chronic and acute gastrointestinal, hepatic and nutritional disorders within each fellow's clinic. Fellows, under the guidance of a clinic mentor, are primarily responsible for the care of their patients. During this weekly clinic, fellows develop their clinical skills and emphasize the importance of continuity of care. A support team consisting of dietitians, psychologists and nurse practitioners provides the fellow's clinic with comprehensive and integrated care for each patient.

Procedures

The fellowship program benefits from an active therapeutic endoscopy program with a busy endoscopy suite, which in 2023 completed 3,192 procedures. The overall volume of our practice ensures all fellows will be competent and proficient in core procedures such as upper endoscopy, colonoscopy, polypectomy, esophageal dilatation, rectal suction biopsy and therapies for gastrointestinal bleeding, including banding, sclerotherapy, cautery and clips. Fellows also have exposure to gastrostomy tube placement, esophageal impedance monitoring, pneumatic dilatation, esophageal manometry, anorectal manometry, capsule endoscopy, endoscopic retrograde cholangiopancreatography, balloon enteroscopy and endoscopic ultrasound.



training tracks

There are several training tracks within our program:

Clinical Track

This track is geared toward fellows who wish to become academic clinicians, as well as clinical educators, and develop expertise in a specific area within gastroenterology. After the first year, the fellow will have the opportunity to focus on a particular clinical area such as inflammatory bowel disease, pancreatobiliary diseases, therapeutic endoscopy, motility, nutrition, cystic fibrosis or liver disease. The fellow will engage in a clinical research project within that area of interest and work to develop the specialized skills in the selected field.

Cystic Fibrosis (CF) Track

This unique track is designed to provide an environment enriched in opportunities to develop CF-related research for a fellow interested in CF care and research. Uniquely, both a pediatric gastroenterologist and a pediatric pulmonologist provide the leadership of our CF Center. Several active research programs on campus are focused on aspects of CF, including liver disease, lung disease, pregnancy, nutrition, and new and novel therapeutics for correcting the genetic mutations that cause CF. This track offers the opportunity to apply for a CF Foundation Fellowship Grant to support both clinical and research endeavors throughout fellowship and beyond.

Research Track

This track is aimed to train fellows to become independent physician-scientists in gastroenterology, nutrition or hepatology. After the first year of clinical rotations, the fellow will focus on a specific area of basic research under the guidance of an established UTSW faculty member and scholarship oversight committee. Although most of a fellow's time will be devoted to laboratory research in this track, the fellow will continue to care for patients in their weekly outpatient clinic.

National Meetings and Training Grants

All of our fellows are encouraged to submit and present their research at local, regional and national meetings. Many of our fellows have presented both poster and oral presentations and have received multiple awards and financial support for their research activities.

The fellowship program is supported by several training grants, including:

- National Institutes of Health (NIH) T32, in conjunction with our adult GI colleagues
- Cystic Fibrosis Foundation-sponsored Clinical Fellowship training grant

The program also has reserved fellowship slots for M.D./Ph.D. candidates as part of the Department's Physician-Scientist Training Program (PSTP) in Pediatrics (PSTP2). The PSTP2 allows qualified candidates to receive training in pediatrics at UTSW and Children's Medical Center for two years followed by clinical and research training in the Pediatric Gastroenterology Fellowship program. The program also fosters transition to a junior faculty appointment through several ongoing support mechanisms.

teaching and didactic activities

Our fellows actively participate in ongoing didactic activities within our Division. The teaching activities are designed to provide a comprehensive educational program for fellows with an emphasis on the integration of clinical practice, scientific knowledge and scholarly activities.

National

We make sure all our fellows have the opportunity to attend and participate in the North American Society of Pediatric Gastroenterology, Hepatology and Nutrition (NASPGHAN) Fellows' Conferences. As a program, we are very committed to supporting NASPGHAN and its educational activities, which represent opportunities to network and develop relationships that will be important throughout a fellow's career. Additionally, we are proud that many of our faculty members have participated, organized and led these conferences, including Bradley Barth, M.D., Norberto Rodríguez-Báez, M.D., Rinarani Sanghavi, M.D., Meghana Sathe, M.D., and David Troendle, M.D.

We also encourage our fellows to participate in NASPGHAN's other national conferences, as well as those of other organizations, such as the annual meeting of the American Association for the Study of Liver Diseases (AASLD), the North American Cystic Fibrosis Conference (NACFC), Digestive Diseases Week (DDW), the Society of Pediatric Research (SPR) annual meeting and the Pediatric Academic Societies (PAS) annual meeting.

Departmental

We encourage fellows to participate in departmental conferences designed for multidisciplinary interactions. Fellows are often invited to present cases in collaboration with faculty from various department to illuminate the challenges and lessons learned from a complex case.

Departmental conferences include: Department of Pediatrics Research Forum, Departmental Fellows Conference, Grand Rounds and Multidisciplinary Conference.

Intradepartmental

Intradepartmental conferences are smaller conferences focused on GI topics in collaboration with one or more other divisions.

Intradepartmental conferences include: Joint GI and Surgery Conference, Joint GI and Critical Care Conference, Nutrition Conference, Pathology Conference, Pediatric/Adult Combined Conference and Radiology Conference.

Special Endowed Lectures

The Division hosts several ongoing endowed lectures throughout the year, including the annual Willis C. Maddrey Liver Lecture and the Gary Morchower Lectureship in Pediatric Gastroenterology. The events are opportunities to bring outstanding national leaders in the fields of gastroenterology and hepatology to UTSW for state-of-the-art clinical and research presentations, discussions with the faculty and fellows, and sharing of educational and training perspectives.

Divisional

Divisional conferences are designed specifically for the benefit of our fellows to cover core GI topics as well as provide a broad curriculum focusing on developing a successful career. Topics also emphasize ethical practice, evidence-based medicine, quality improvement and research.

Divisional conferences are: Board Review, Book Club, Fellow-Faculty Career Development/Teaching Series Conference, Core Curriculum, Culinary Medicine, Fireside Chats, Inflammatory Bowel Disease Team Weekly Meeting, Journal Club, Liver Transplant Meeting, Liver Team Weekly Meeting, Fellows' Motility Series, Weekly Morning Case Conference, Morbidity and Mortality, and Quality Improvement.

sample weekly conference schedule

| Monday | Tuesday | Wednesday | Thursday | Friday |
|--------------------------------------|---|--------------------------------|---|-------------|
| A.M. *IBD Team Meeting | A.M. | A.M. *Grand Rounds | A.M. Divisional Conference | A.M. |
| Noon Divisional Conference | Noon *Departmental Multidisciplinary Conference | Noon Board Review | Noon Divisional Conference | Noon |
| P.M. | P.M. Fellows' Clinic *Liver Team Meeting | P.M. Fellows' Clinic | P.M. Fellows' Clinic *Liver Transplant Meeting | P.M. |

**Optional/Rotation specific*

developing teaching skills

Teaching is an important component of our training program, which aims to give our fellows the skills they need to become lifelong teachers to others. In addition to leading inpatient rounds under the guidance of a GI attending, our fellows take part in many ongoing teaching activities, including participating in the medical school GI curriculum for second-year medical students, the fourth-year medical student boot camp, medical student Pediatric Clerkship core lecture series and residency lectures series. The pediatric house staff have repeatedly recognized our fellows for their outstanding devotion to patient care and medical education. Our fellows have also consistently won teaching awards from the medical students and residents, including Michael Russo, M.D., Eduardo Beltroy, M.D., Lillianne Chan, M.D., Sherief Mansi, M.D., Nicholas Norris, M.D., and Claudia Moreda-Rivero, M.D.

Fellows also participate in education of patients and families through different programs such as Camp Oasis and family education sessions for patients with inflammatory bowel disease, celiac disease, eosinophilic esophagitis and cystic fibrosis

Several of our faculty have also won UTSW teaching awards, including John Andersen, M.D., and Norberto Rodríguez-Báez, M.D. At the national level, Dr. Rodríguez-Báez received the 2022 NASPGHAN Master Educator Award, and he joined a group of distinguished individuals who have made a significant and sustained contribution to the field of pediatric gastroenterology, hepatology and nutrition through educational scholarship on a national and international basis.

In 2022, the John Milton Andersen Award for Teaching Excellence was created in honor of Dr. Andersen's years of dedication to UTSW/Children's Health, inspiring and teaching medical students, residents, fellows and faculty about the evolving field of pediatric gastroenterology, hepatology and nutrition. The inaugural recipient of this award was Dr. Rodríguez-Báez, followed by Amal Aqul, M.D., and Bhaskar Gurram, M.D.

alumni's performance

We are very proud our program has a high passing rate for all first-time takers of the Pediatric Gastroenterology Board Certification exam. We also take pride in having developed many successful academic physicians practicing in major academic centers in the United States, both on clinical and research tracks, and participating in significant leadership roles within NASPGHAN and other medical societies.

alumni's perspectives

"The faculty truly has your best interest at heart. I enjoyed working in such a positive environment. It helped me grow and understand the art of medicine even more. My fellowship gave me the opportunity not only to focus strongly on my clinical training but also to spend my second and third year working on a basic science research project. Even though I did not pursue basic science research as a career, the experience taught me to critically think and problem solve. If you come to UTSW, you will inherit a second family. These relationships will remain an indispensable resource throughout your career."

SABINA ALI, M.D.
CLASS OF 2008

"I really loved my fellowship in Dallas. It was like a family, and I believed the attendings were invested in my growth. I was always passionate about treating childhood obesity, which led me to my work in NAFLD. Aside from the strong clinical foundation the fellowship provides in general GI, I was able to do clinical research specializing in NAFLD. I was very fortunate to have amazing mentors, obtain a research grant and learn how to lead a multidisciplinary team. With the support of my mentors and the program, I was able to do extra training at Children's Hospital of Philadelphia in nutrition and obesity. I believe if you are passionate and hardworking, this fellowship will help foster your goals and train you to be an amazing gastroenterologist."

JENNIFER PANGANIBAN, M.D.
CLASS OF 2015

“UTSW was my top choice for fellowship because of two reasons – people and training! Every person I met on my interview day at UTSW was so warm and welcoming. I felt like this is the type of ‘work family’ I want for fellowship. Since I matched, I have been supported by the faculty and my amazing co-fellows in every matter – be it moving from the East Coast or adjusting to the new city/workplace – everyone has been very helpful (and flexible in current times of the COVID pandemic). Fellow education, training, career goals and their well-being are given the utmost importance at UTSW. Diverse clinical exposure and endless research opportunities are the norm here! Living in Dallas has been pretty good so far (and cheap, too, as compared to NY/NJ life). I look forward to a great training in peds GI and the southern life!”

AAYUSH GABRANI, M.D.
CLASS OF 2023



fellows' perspectives

"My experience as a first-year pediatric gastroenterology fellow has been one of immense learning. Being able to train at a major pediatric referral center in the area gives me the opportunities to see and learn from a great variety of pathologies and allows me to be exposed to multiple different procedures. I will be forever grateful to my past mentors that helped me to become the person I am today and to my current ones that, in this short time, have taught me so much about the GI world. You will never regret becoming part of the UTSW family."

CLAUDIA MOREDA RIVERO, M.D.
CLASS OF 2025

"Being a pediatric GI fellow at UTSW has been an unforgettable chapter in my medical career. The breadth of gastrointestinal pathology and procedures we are exposed to on a daily basis is remarkable. This program cultivates such a warm, supportive and collaborative environment that is ideal for learning and personal growth. All faculty are excited to teach and share their own passions and knowledge within the field. Living in Dallas with endless sunshine and delicious BBQ is just another perk. I am truly so grateful to train at a program that feels more like a big family than just an institution."

ASHLEY POLACHEK, M.D.
CLASS OF 2026

"Training at UTSW has been a joy. The diversity of GI subspecialties is fun to explore and helps round out our general GI knowledge. I consider myself privileged to see the array of gastrointestinal pathology we're exposed to daily and lucky to work with experts in the field, who I felt have made me a better doctor and will help me take the best care of my patient moving forward."

NICHOLAS NORRIS, M.D.
CLASS OF 2024

living in dallas



8+ million
people in Dallas/Fort Worth
and its surrounding
communities



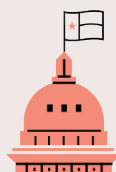
**Highly diversified
economy**
with broad employment
opportunities for
two-career families



One of the most
stable housing
markets in the nation



DFW International
is one of the nation's
largest airports



**No state or city
income tax**



World-class
art museums and a
vibrant night life



• Dallas' diverse population infuses neighborhoods, street festivals, food and culture with rich ethnic inspirations

• Strong public and private school systems

• Cost of living lower than the national average



• Home to the corporate headquarters of many major organizations

• One of the largest urban districts in the country

• Numerous public lakes and trails



• Diverse shopping scene, from luxury brands at NorthPark Center to hidden gems in neighborhoods like the Design District and Knox/Henderson

• One of only 13 cities in the country with all four major professional sports teams

• Southwest Airlines is headquartered in the heart of the city at Dallas Love Field Airport

More information about Dallas can be obtained from visitdallas.com
and listings.guidelive.com.

a message from the Division Chief, Dr. Bradley Barth

Thank you for considering UT Southwestern and Children's Health as the site of your Pediatric GI, Hepatology and Nutrition fellowship training! You will undoubtedly find this to be a supportive and collegial environment committed to training future leaders in our field. Our expertise in clinical care and medical education, including the most advanced pediatric therapeutic endoscopy program in the nation, is well recognized nationally and frequently attested to by our graduated trainees. Clinical and bench research opportunities are bountiful and include, but not limited to, opportunities in IBD, cholestatic liver disease, cystic fibrosis and obesity.

I appreciate your interest in joining our team, and I look forward to meeting you on your interview day.

BRADLEY BARTH, M.D.

Division Chief

bradley.barth@utsouthwestern.edu



applying to our program

Our fellowship program participates in the National Resident Match Program (NRMP) and the Electronic Residency Application Service (ERAS). Our program accepts U.S. citizens or those with a J-1 visa, but it does not accept H1B visas.

Contact Information

Pediatric Gastroenterology Fellowship Program

UT Southwestern/Children's Medical Center

2350 North Stemmons Fwy., Suite F4500

Dallas, TX 75207

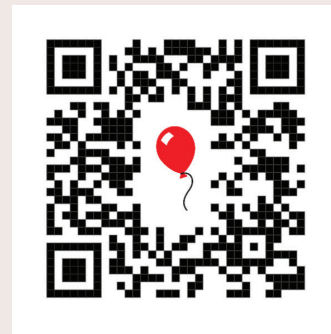
Phone: 214-456-0117

Fax: 214-456-8006

allison.miles@utsouthwestern.edu

meghana.sathe@utsouthwestern.edu

charina.ramirez@utsouthwestern.edu



**Scan the QR code for
more information.**



children'shealth[®]

UTSouthwestern
Medical Center.™